

Technical Booklet

1. LG Service News

- Introducing LG Error Codes Online Website
- Safety Check List and Safe Repair instructions for R600a Sealed System Repair

2. LG Service App

3. Yoder Loop Leak Protocol and Testing

4. Service Bulletins

LG Electronics Alabama, Inc.
2023. 07

Contents

1. LG Service News	
- Introducing LG Error Codes online website	Page. 2
- Safety Check List and Safe Repair instructions for R600a Sealed System Repair	Page. 3
2. LG Service App Guide	Page. 5
3. Yoder Loop Leak Protocol and Testing	Page. 10
4. SVC Bulletin – Refrigerator	
4.1. [SVC Method] FMA, FLD compressor software upgrade guide (Released date: 5/18/23)	Page. 15
5. SVC Bulletin – Washing Machine	
5.1. [SVC Notice] Troubleshooting issue missing Segment in PCB Display (Released date: 2/1/23)	Page. 24
5.2. [SVC Method] Clothes stuck or inserted under pulsator (Agitator) (Released date: 2/10/23)	Page. 27
6. SVC Bulletin – Cooking(Gas Oven)	
6.1. [SVC Guide] Replace the cooktop burner orifices(nozzles) (Released date: 1/20/23)	Page. 30
6.2. [Parts] SKSDR480SIS/GS Water tank and steam heater proactive SVC guide (Released date: 6/9/23)	Page. 34
7. SVC Bulletin – TV	
7.1. [Parts] How to apply tool option for newly developed SVC LCD Module(55UP76/77/80/81) (Released date: 6/21/23)	Page. 38

* The information is subject to change or update without notice.

1. LG Service News (1/3)

LG Authorized Servicer Only

Dear Valued Service Partners,

In April 2023, LG launched a new technical resource, [LGErroCodes.com](https://lgerrorcodes.com). This website contains detailed information and technical contents for each error code on every LG Appliance. The website fully functions on phones, tablets, and computers. Incredible attention to detail was taken when compiling the list of products and their corresponding error codes. **Click on a product icon below to check it out for yourself!!**

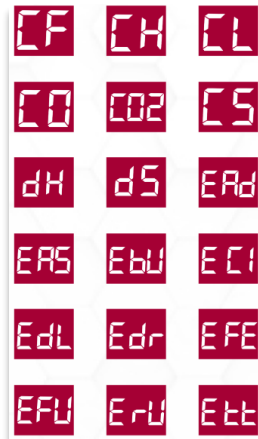
LG ERROR CODES



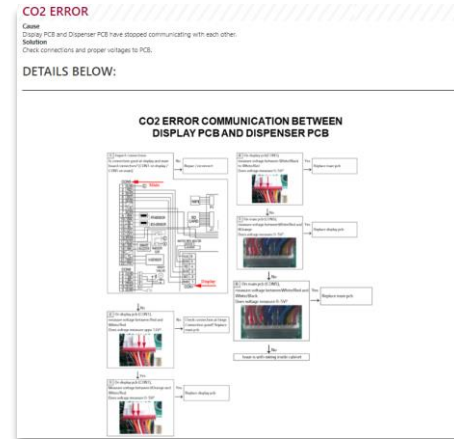
Benefits of LGErroCodes.com

- ✓ **FREE!** No username / password required
- ✓ Every error code for each appliance
- ✓ Technical contents for each error code
- ✓ Access on any device (phone, tablet, pc)
- ✓ Also located in LG Tech App (LGTA) under error code summary

All of the Error Codes



Cause / Solution / Technical Content



Dear Valued Service Partners,

In 2019, LG (and other manufacturers) began using R600a refrigerant in refrigeration products. Since most LG refrigerators now have this new refrigerant, repair volume as well as reclaims have been steadily increasing. Please see below for the safety checklist and repair instructions for R600a sealed system repair

Safety Check List

1. Check which refrigerant is used (R134a or R600a).
2. Use a combustible gas leak detector. If flammable refrigerant is detected, immediately ventilate.
(Caution : do NOT use leak detectors with an arc or spark module to check for leaks)
3. Check the refrigerant used for refrigerator and use appropriate PPE for safety.
4. Ensure a dry-powder fire extinguisher rated for Class B fires is accessible on site.
5. Utilize a tubing cutter, not a torch or other heated surface tool due to flammable refrigerants.
6. Conduct all servicing in a well-ventilated area.
 - Whenever possible, open a window, door or other means to ventilate the area
 - The area should be free of open flame or burning materials
 - Maintain a safe zone around the appliance during service work to prevent ignition sources

R600a Sealed Repair Basic Tools










Sparkless Vacuum Pump	Gas Leak Detector	Fire Extinguisher (dry-powder, Type B)	Refrigerant Recovery Bag (Vulcan)	Lokring Tool	Lokring Tool Jaw (2EA)	3 Way Valve Jig	Lokprep
							

Safe repair instructions for R600a sealed system repair

Please read the following instructions and differences between R134a and R600a repair carefully prior to R600a sealed system repair. There are special tools required for R600a sealed system repair, so it is very important to use the proper tools for your safety.

Repair steps comparison

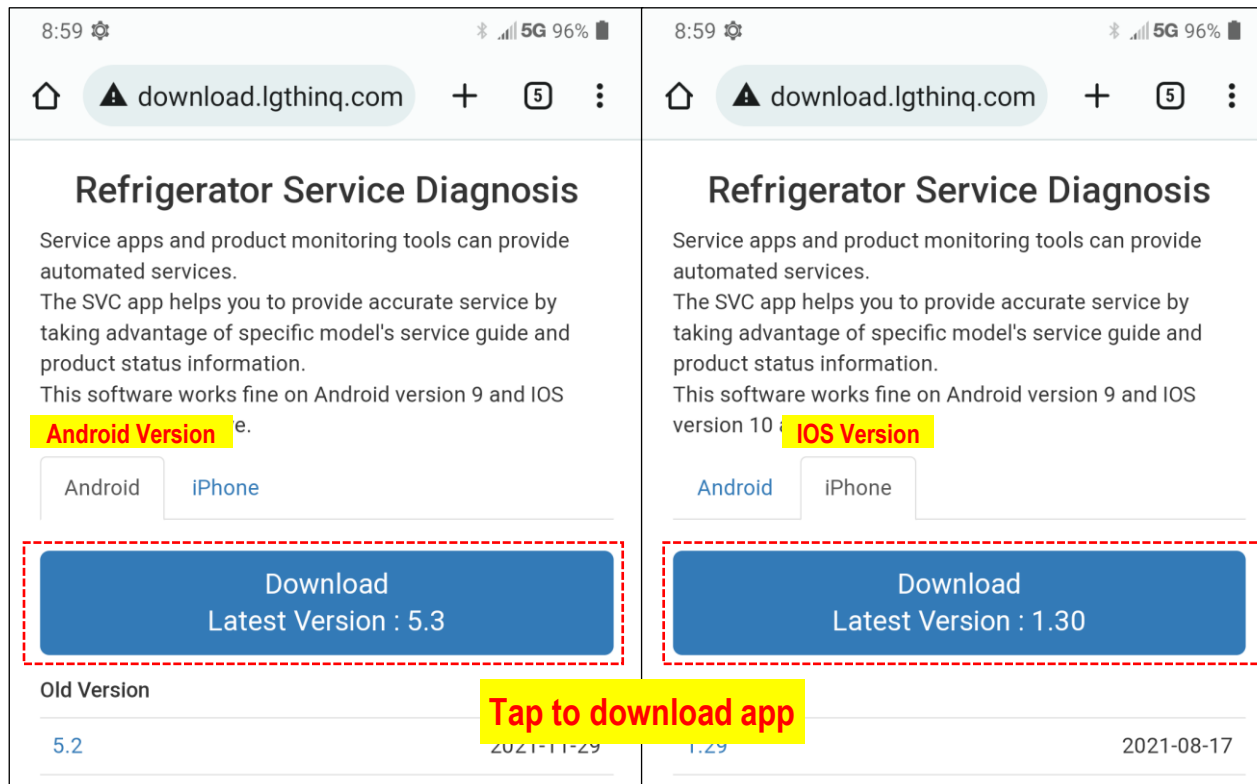
Steps	R134a	R600a
Prepare	Have all tools ready for work	Ensure that the work area is well <u>ventilated</u>
Refrigerant Removal	Using a certified recovery Machine and a recovery cylinder	<p>Completely remove refrigerant</p> <p>Using a <u>refrigerant bag</u></p>  <p>Refrigerant bag</p>
Cutting	<u>Do not use a torch to remove pipes, use a tubing cutter</u>	
Connecting	Use either torch or Lokring	<p><u>Measure each pipe diameter to select Lokring size</u></p> <p><u>Assemble Lokring w/ Lokring tool, jaws & Lokprep</u></p> <p><u>Check gas leakage on Lokring connectors</u></p> <div style="display: flex; justify-content: space-around; align-items: flex-start;"> <div style="text-align: center;"> <p>Lokring hand tool</p>  </div> <div style="text-align: center;"> <p>Lokring jaws</p>  </div> <div style="text-align: center;"> <p>Lokprep</p>  </div> <div style="text-align: center;"> <p>Gas detector</p>  </div> </div>
Vacuum work	Use standard or sparkless vacuum pump	<p><u>Use sparkless vacuum pump</u></p> <p>Sparkless vacuum pump</p> 
Recharging	<p>Measure the R134a refrigerant amount with scale and recharge</p> <p>* Amount Tolerance : -3g ~ +3g</p>	<p><u>Use the exact amount of R600a required for the unit</u></p> <p>* Amount Tolerance : -3g ~ +1g</p> <p>90g Can</p> 

LG Service App Guide



1. How to download and install SVC App (1/2) - Download Guide

- Download the latest version app: **Download Link: <https://svc-download.lgthing.com>**
- There are 2 versions of SVC App. One is for Android and the other one is for IOS.
- SVC App is supporting Refrigerator, Washing Machine, Cooking and Dishwasher Products.



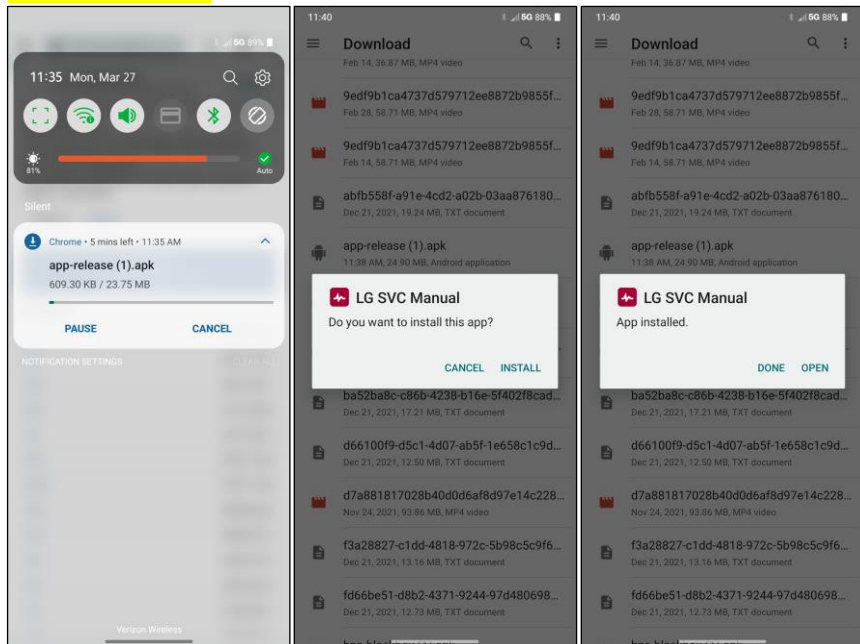
2. LG Service App (2/4)

LG Authorized Servicer Only

1. How to download and install SVC App(2/2) - Installation Guide

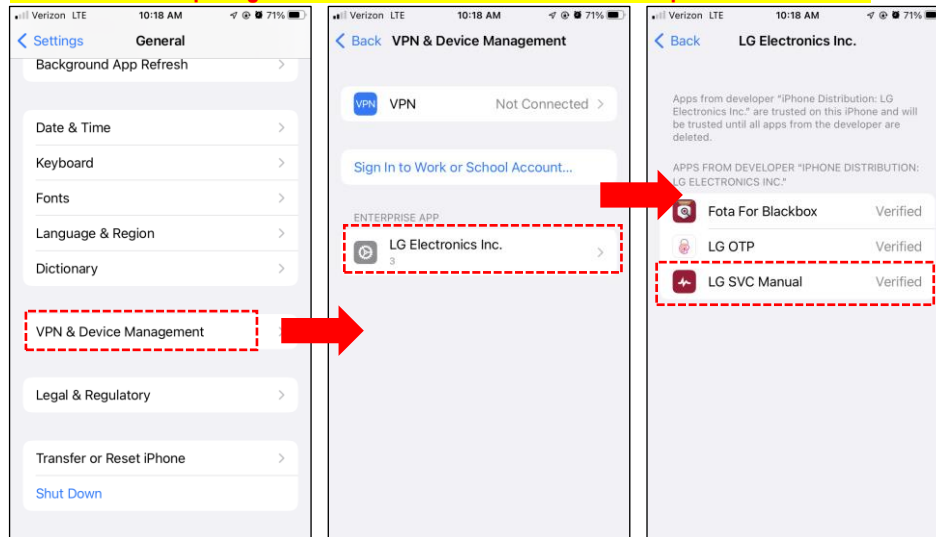
- Download the latest version app: **Download Link: <https://svc-download.lgthing.com>**

Android Version



Download SVC App file → Install SVC App

iOS Version – Requiring to set LG Electronics as a trusted enterprise



Before installing SVC App, please register LG Electronics as a trusted enterprise

2. LG Service App (3/4)

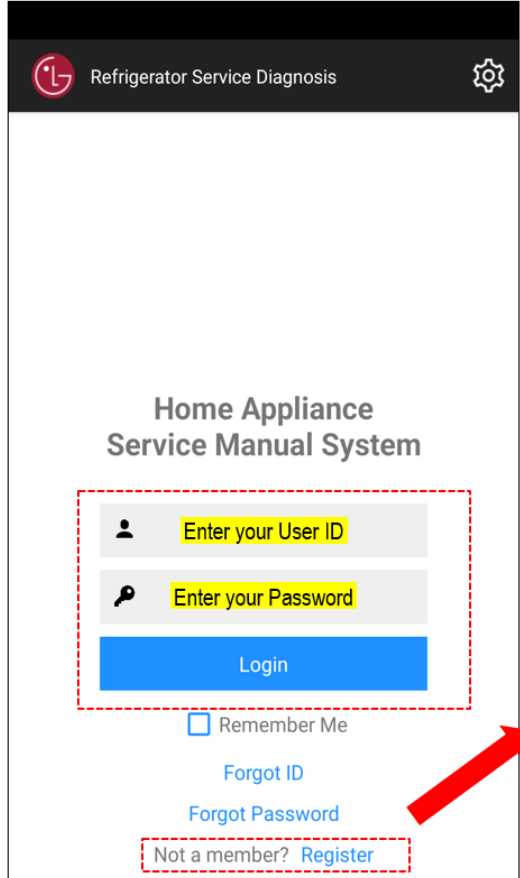
LG Authorized Servicer Only

2. Create SVC App Account and Log In

Open SVC App after installing

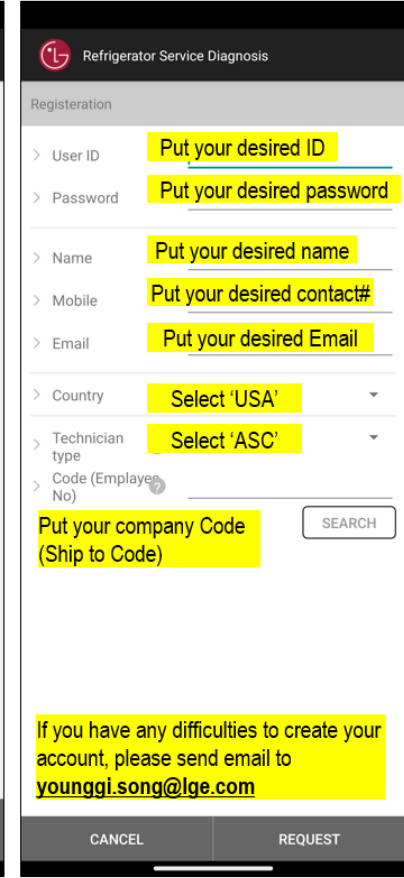
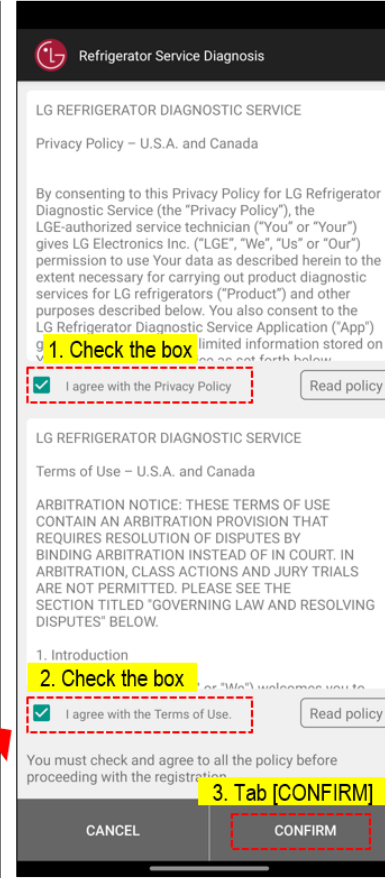


Initial SVC App Display



Create your account

Create your account

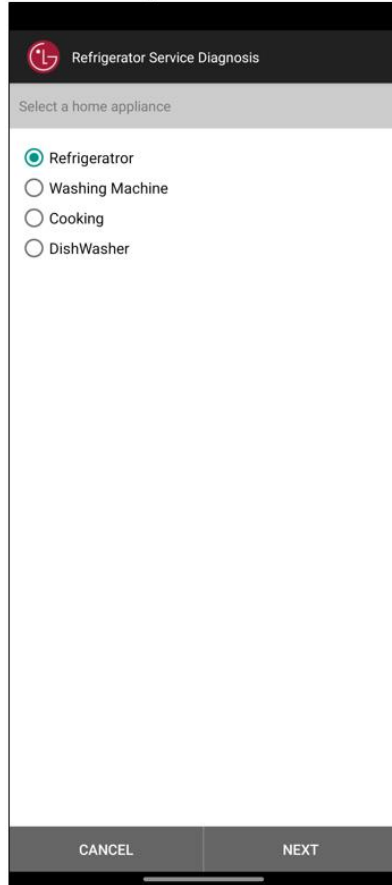


2. LG Service App (4/4)

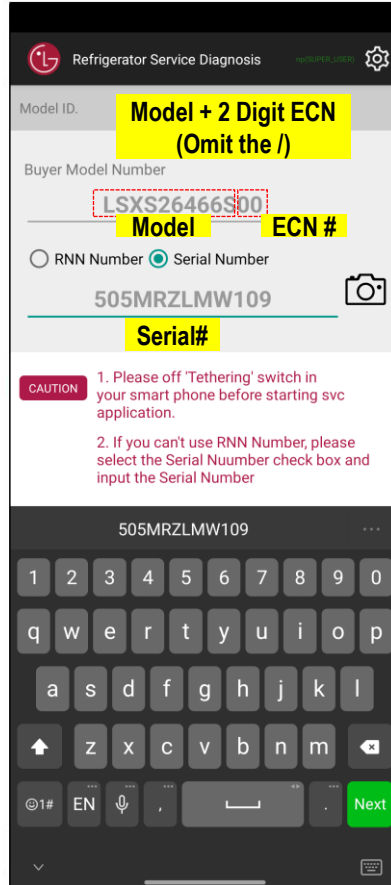
LG Authorized Servicer Only

3. How to use SVC App after log in

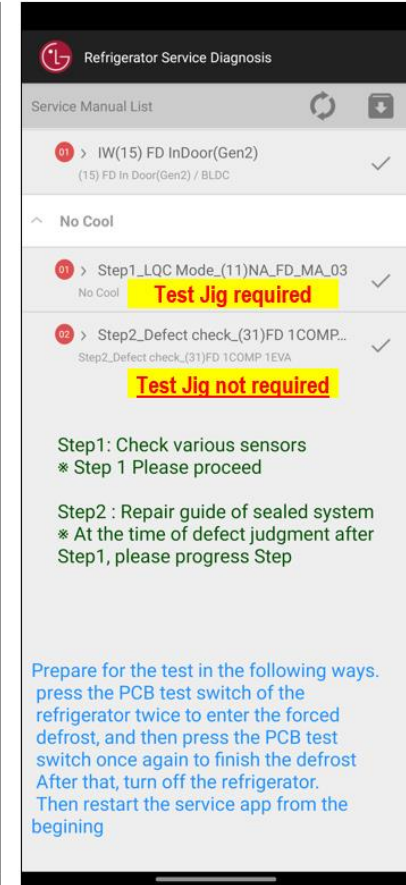
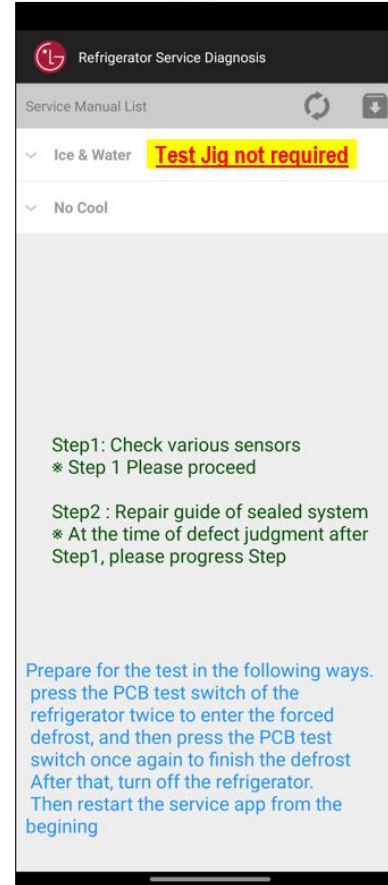
Select Refrigerator



Enter model and serial#



Select Issue Symptoms



4. LG Contact Information regarding SVC App

If you have any questions or difficulties, please send an email to younggi.song@lge.com

3. Yoder Loop Leak Protocol and Testing (1/4) Technician/Service Only

☐ Yoder Loop Leak Protocol

Before isolating a Yoder Loop or even tapping into a sealed system you need to have gathered the below readings from the unit...

- **Temperature inside the unit.**
- **Compressor Amp Draw.**
- **Compressor Voltage.**
- **Evaluate Frost Pattern.**

(And of course, you need to rule out all factors that could mimic a sealed system issue. Airflow Issues, Defrost Issues, Fan Issues, etc. Before ever tapping into a unit).

Once you tap you need to record...

- **High Side Run Pressure**
- **Low Side Run Pressure**

(It is best that the unit has been running for at least 25 minutes before gathering these pressures so that you are seeing accurate readings. Many units have a start up process where the Compressor does not run full stroke for the first 25 minutes.

This means it would be wise to contact the customer the day before or hours before you arrive to make sure the unit has been plugged in and running so you do not have to wait once in the home.)

Equalization Test

(needed if pressures could sway to leak or restriction. A restriction after the drier can mimic high side leak pressures)

- An equalization test can be done to rule out restrictions. Pressures should equalize in under 10 minutes if there are no restrictions.
- Once the unit equalizes, record what pressure it equalizes at. (Note that Ambient and internal temperatures will affect what PSI the pressures will equalize at).

All the above should be recorded in your notes in GSFS for all sealed system repairs. In the case that you need to contact TCC the agent will need the information above to properly diagnose with you.

If the above readings do not point toward High Side Leak then troubleshoot for low side leak, restriction, inefficient compressor, or whatever the case may be.

If the above readings point toward High Side Leak you will need to isolate your high side components and check for leaks.

- 1) Pressurize the whole high side to 200psi and bubble test all visible joints and leak points.
(Joints at Compressor, Condenser, Drier).
- 2) If you do have a drop in pressure on the high side and can find no leaks at any joints then isolate the condenser and test it by itself.
- 3) If no joints on the High Side are leaking and the condenser is not leaking, then the Yoder can be tested.

3. Yoder Loop Leak Protocol and Testing (2/4) Technician Only

❑ To properly test the Yoder Loop(1/3)

- Yoder needs to be fully isolated by itself. This means removing the drier and cutting the yoder loose on the condenser side above the factory connection.
- Close off one side of the yoder loop.
- Attach one gauge to the other side of the yoder loop. There is no need to hook up gauges to both sides of the yoder, this increases your chances of equipment failure mimicking a yoder leak.

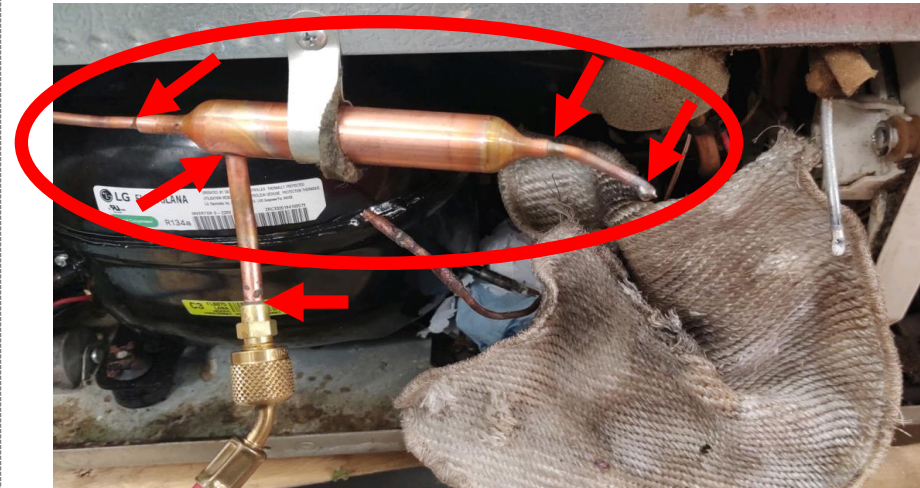
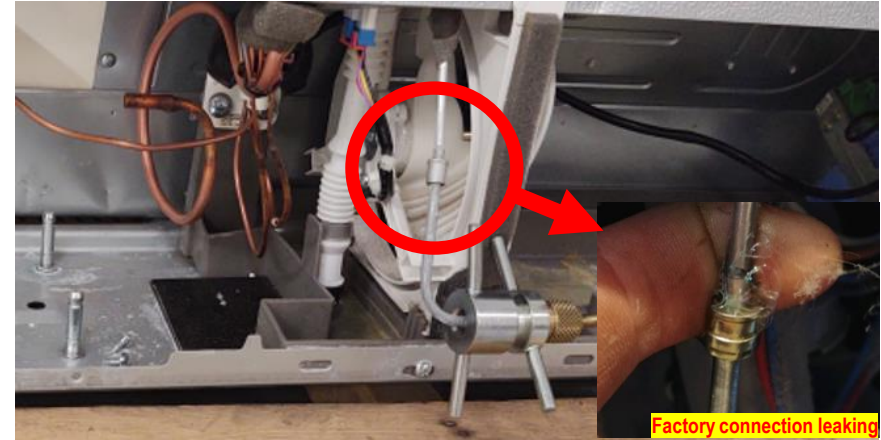
Right side are examples of Proper isolations and what will be expected to be seen by the TCC agent when running telepresence.



3. Yoder Loop Leak Protocol and Testing (3/4) Technician Only

❑ To properly test the Yoder Loop(2/3)

Right side are examples of improper isolations that need the driers and factory connection points removed because they sometimes leak and will trick you into thinking the yoder is bad. The goal is to eliminate all possible leak points outside of the yoder loop.



Above Example shows multiple potential leak points and why the drier needs to be removed for testing

3. Yoder Loop Leak Protocol and Testing (4/4) Technician Only

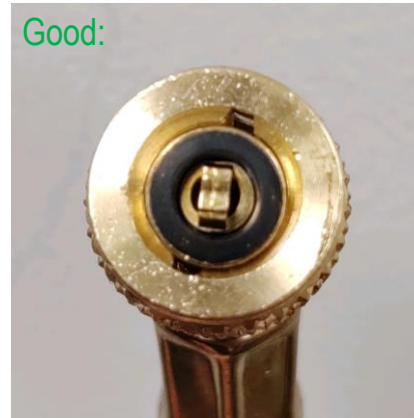
☐ To properly test the Yoder Loop(3/3)

Once you have fully isolated the Yoder Loop by itself, Pressurize up to 300PSI and watch for a drop in pressure. If there is a drop in pressure you need to take bubble solution and spray your connections and possible leak points where you are connected to the yoder.



Technician connection leaking

Also, make sure your gauges are not leaking. The seals need to be replaced regularly and your gauges need to be pressure tested from time to time to make sure they are not slowly leaking and mimicking leaks.



If all the above has been done and you feel the yoder loop is leaking, you will need to call into TCC with your readings and findings. Telepresence will need to be ran so the TCC agent can verify that the yoder is the issue.

Refrigerator SVC Bulletins

Service Bulletin

Compressor (FMA, FLD) S/W upgrade guide

Bulletin Type: SVC Notice Parts Others Applicable only with symptoms with every repair

Applicable for Serial Number : ~304 (2023.04)

Applicable for models : Refer to the next pages
 (FLD165NBMA, FMA088NBMA, FMA102NAMA, FMA102NBMA Compressor)

Symptoms	Compressor S/W(Software) Upgrade	Picture	N/A
Cause	N/A		

- 1. Repair Instruction (Compressor S/W Upgrade)**
 ※ Minimum required version for software update Jig : V8.15 (Revision No. : 16)_Released in May 2023
- ① **Update the Main PCB using the SVC Jig for all symptoms (Proactive) Refer to page 6 – 8**
 ※ When installing a new S/W firmware to the Jig, always delete all files and copy/replace all files.
 ※ Caution : When updating Main PCB using SVC Jig, unplug the refrigerator power cord. If the power cord is not unplugged, the Jig and PCB may be damaged.
 - ② **Check the checksum after S/W update Refer to page 2-4 for To-Be checksum**
 - ③ **For cooling issues where temperatures are not staying in range, replace the compressor along with updating the S/W.**

Service Bulletin

2. Current and New (Visual / Part number & Name etc)

Compressor: **FLD165NBMA**

Comp S/W List(FLD165NBMA)			
As-Is (Before)		To-Be (After)	
SW P/No	Checksum	SW P/No	Checksum
SAA42530602	0xE031	SAA44318001	0x0D97
SAA43428701	0xBE18		
SAA43428701	0x52F1		
SAA44318001	0x10CD		
SAA42530801	0x049E	SAA42530801	0xCF50
SAA42530801	0xD298		
SAA43644001	0x6634	SAA43644001	0x03B1
SAA43644001	0x504F		
SAA43644001	0x0BE1		
SAA42530601	0xFFDC	SAA42530601	0xC993
SAA42530601	0xCDD8		
SAA38633701	0x69A6	SAA44287801	0x1460
SAA38633702	0x105C		
SAA38633703	0x3F13		
SAA38633704	0xD888		
SAA38633705	0x3B67		
SAA44287801	0x2E2B		
SAA40489901	0x126B		
SAA40489902	0x95DD	SAA44287701	0x3E4F
SAA40489903	0xD2D1		
SAA44287701	0x4C26		

Comp S/W List(FLD165NBMA)			
As-Is (Before)		To-Be (After)	
SW P/No	Checksum	SW P/No	Checksum
SAA38311201	0x86B1	SAA44287501	0xA315
SAA38311202	0x75D2		
SAA38311203	0x69AA		
SAA38311204	0x82A3		
SAA38311205	0x1060		
SAA38311206	0xFD98		
SAA38311207	0x67F0		
SAA39270401	0x97E7		
SAA38632501	0x028F		
SAA40561101	0x126F		
SAA40561102	0x95E1		
SAA40561103	0x8C33		
SAA43698501	0x81D6		
SAA43746201	0xEB62		
SAA44287501	0xC0C2		

Service Bulletin

2. Current and New (Visual / Part number & Name etc)

Compressor: **FMA102NAMA & FMA102NBMA**

Comp S/W List(FMA102NAMA/NBMA)			
As-Is (Before)		To-Be (After)	
SW P/No	Checksum	SW P/No	Checksum
SAA37982101	0x7C67	SAA44255701	0x795F
SAA37982102	0x5F68		
SAA37982103	0xF14E		
SAA37982104	0x9CBF		
SAA38251801	0x78FD		
SAA38251802	0x54C4		
SAA38251803	0x641B		
SAA38251804	0x641B		
SAA41765201	0x6270		
SAA42029801	0xE7E7		
SAA38251805	0xA39A		
SAA41776801	0xA93F		
SAA42030401	0x2E98		
SAA43801301	0x2FAC		
SAA44255701	0x7AB8		
SAA38251806	0xBB61		
SAA38251807	0xB7E3		
SAA42030101	0x485D		
SAA42030102	0x48D6		
SAA43794701	0x46A2		
SAA44255801	0x8561		

Comp S/W List(FMA102NAMA/NBMA)			
As-Is (Before)		To-Be (After)	
SW P/No	Check Sum	SW P/No	Checksum
SAA38979201	0x3D04	SAA44255901	0x22D4
SAA38979202	0x399B		
SAA38979203	0x41C1		
SAA38979204	0x173E		
SAA41825601	0x1375		
SAA42030001	0xA47B		
SAA43803001	0xA58F		
SAA44255901	0x242D		
SAA38645501	0x34CE	SAA44270601	0x414D
SAA39150301	0x8895		
SAA41776601	0x812D		
SAA42030201	0x43CA		
SAA44270601	0x41DE		

Service Bulletin

2. Current and New (Visual / Part number & Name etc)

Compressor: **FMA088NBMA**

Comp S/W List(FMA088NBMA)			
As-Is (Before)		To-Be (After)	
SW P/No	Checksum	SW P/No	Checksum
SAA40368101	0x4BF7	SAA44255201	0x9572
SAA42029101	0xE13E		
SAA40368102	0x4B84		
SAA42152001	0xE0CB		
SAA43799601	0xE1DF		
SAA42152002	0x49DF	SAA44255301	0x86F8
SAA43350601	0x44EA		
SAA43799201	0x45FE		
SAA41000001	0x23F3	SAA44255401	0x2A68
SAA42029301	0xC176		
SAA43803101	0xC28A		
SAA43350602	0x71FC	SAA44270201	0xE490
SAA43762201	0x4445	SAA43762201	0x6A55
SAA42327601	0xA85B	SAA44270501	0x35E8
SAA42472201	0xF81A	SAA44270401	0x7172

Service Bulletin

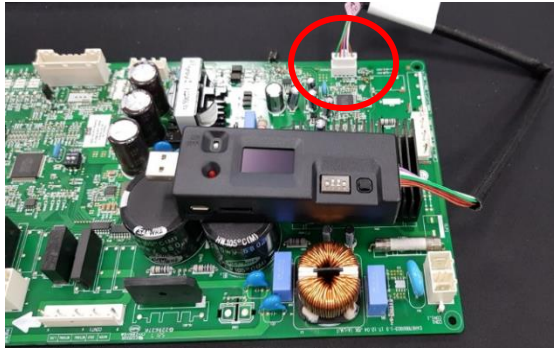
Repair Instruction [Guide - **Comp S/W** writing]

- ※ Minimum required version : V8.15 (Revision No. : 16) Released in May, 2023
- ※ Caution: Do not use "direct mode"

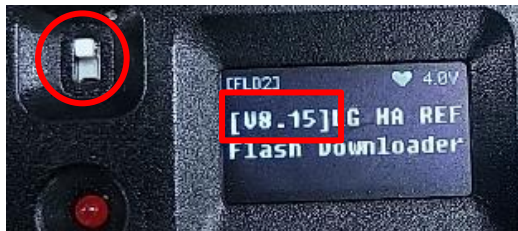
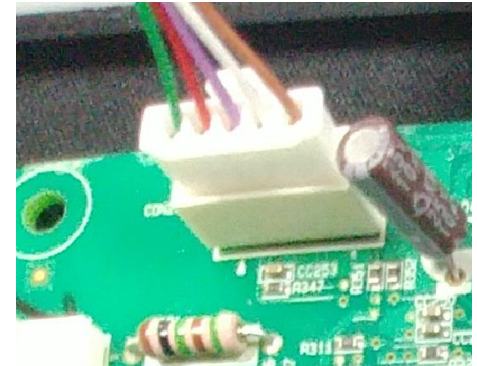


Auto Mode setting
(no.1,4 off no.2,3 on)

jig harness to PCB connector CON201



If the mark is Vcc, connect the red connector
If the mark is Tx, connect the white connector



Power On



Press button



Processing

Service Bulletin

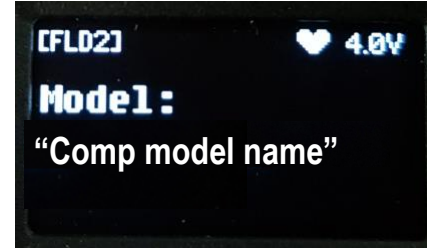
Repair Instruction [Guide - Comp S/W writing]



Wait until the MCU and Checksum are displayed.
 Check the checksum "as is" in the table on pg.2-4.



Press button

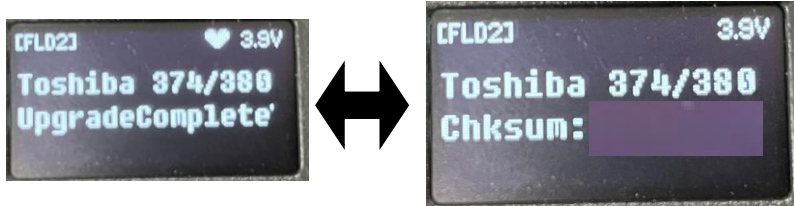


Displays the Comp model name to be serviced.



Press button

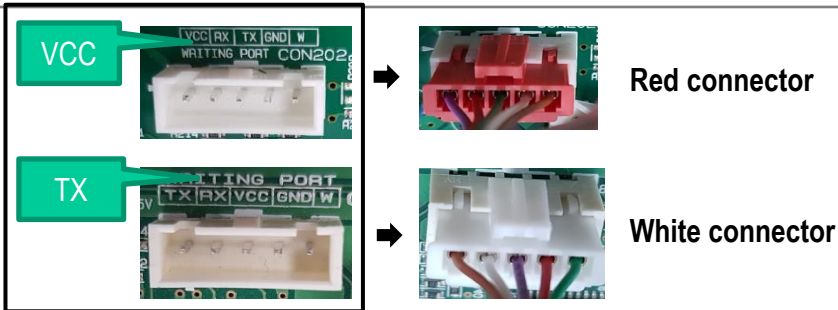
- 1) FLD165B 4K1 1EVA
- 2) FLD165B 2EVA 7B
- 3) FLD165B 4K1 Multi-EVA
- 4) FLD165B 4K1 2EVA
- 5) FLD165B 4K1 Multi-EVA FOTA
- 6) FLD165B 1EVA 7B
- 7) FLD165B 1EVA 5B
- 8) FLA150B J9D Veyron
- 9) FMA102B BatteryReady
- 10) FMA102B OnlyPOWER
- 11) FMA102B 5Byte
- 12) FMA102B 7Byte
- 13) FMA088 1B Lv
- 14) FMA088 7B Lv
- 15) FMA088 BR Lv
- 16) FMA088 Dual Lv
- 17) FMA088 UART Lv
- 18) FMA088C 1B Lv
- 19) FMA088C 7B Lv



The download will proceed automatically.
 Displayed alternately when upgrade is complete
 Check the checksum "To be" the table on pg.2-4.

Remove the jig and harness from the PCB

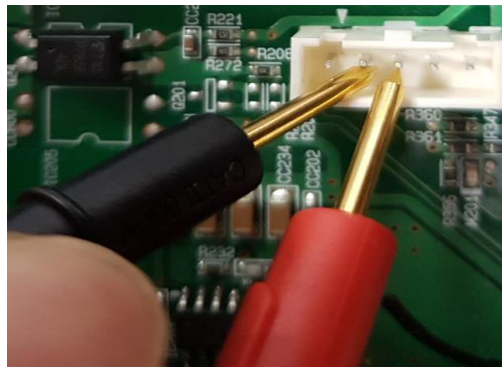
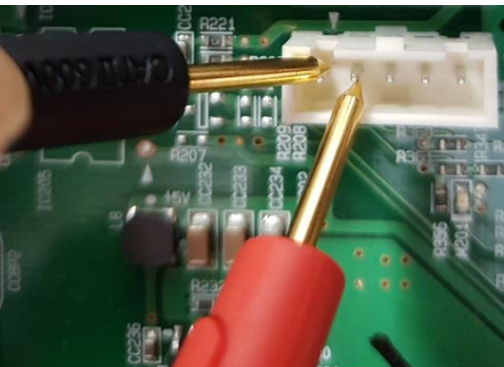
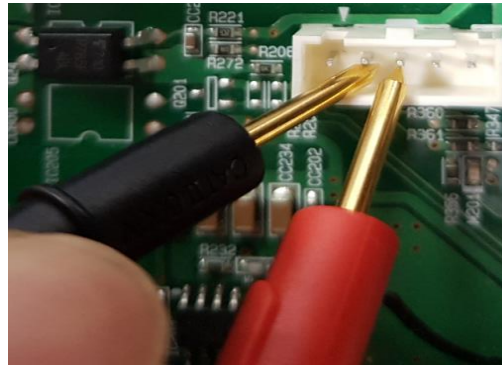
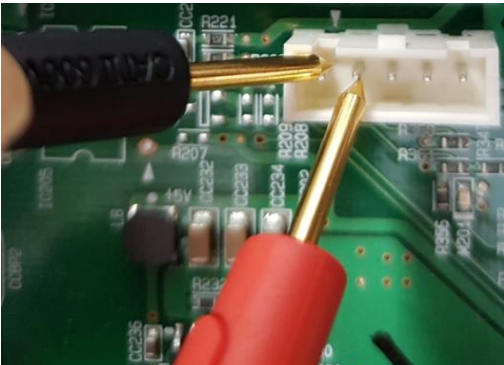
Appendix. How to check the compressor micom connector



< When there is no connector arrangement mark, Please refer to the below method.>

1) Measure the resistance of pins 1 and 2 of the socket. (R_{12})

2) Measure the resistance of pins 2 and 3 of the socket. (R_{23})



$R_{12} < R_{23}$ connect the red connector.



Model code by compressor type

Service Bulletin

FLD165NBMA		
SKSSB4202S	LMXC22626D	URNTS3106N
LSSB2692ST	LRMXC2206D	LRMDS3006D
SRSXB2622S	LMXC22626S	LRMDS3006S
LFXS28968D	LRMXC2206S	LLMXS3006S
LFXS28968S	LFCC23596S	LRMVS3006D
LMXS28626D	LFXC22596D	LRMVS3006S
LRMXS2806D	LFXC22596S	LRMDC2306D
LMXS28626S	LFCS28768S	LRMDC2306S
LRMXS2806S	LFXS28566S	LRMVC2306D
LFXS28596S	LFXS26566S	LRMVC2306S
LMXS28596D	LRFDS3016D	LRFXS2503D
LRMVS2806D	LRFDS3016S	LRFXS2503S
LMXS28596S	LRFVS3006D	LRFXS2513S
LRMVS2806S	LRFVS3006S	LRSOS2706D
LMWS27626S	SKSFD3613S	LRSOS2706S
LFXS26973D	LRFDC2406D	LRSDS2706D
LFXS26973S	LRFDC2406S	LRSDS2706S
LFCS27596S	LRFXC2416D	LHSXS2706S
LFXS26596D	LRFXC2416S	LRSVS2706S
LFXS26596S	SRFVC2406S	LRSOC2306D
LFCC22426S	SRFVC2416S	LRSOC2306S
LMWC23626S	LRFVC2406D	
LFXC22526D	LRFVC2406S	
LFXC22526S	URNTC2306N	

FMA088NBMA, FMA102NBMA	
URETC1408N	LFCS22520D
SKSCF1801P	LRFNS2200W
SKSCW181RP	LFCS22520S
SKSCR2401P	LFC22770ST
SKSCF2401P	LDNS22220W
SKSCW241RP	LDNS22220S
SKSCR3001P	LFDS22520S
SKSCF3001P	LRFWS2200S
SKSFD3604P	LBNC15231V
LSBNC1021P	LRMNC1803S
LRKNS1400V	LRMXC1803S
LRKNS1205V	LRMVC1803S
LRFNS2503V	
LRFCS25D3S	
LRFNS2503S	
LRFCS2503D	
LRFCS2503S	
LRDCS2603D	
LRDCS2603S	
LRFNS2200S	
LRFNS2200D	

Washing Machine SVC Bulletins

Service Bulletin


[Quality_Common][Others] Troubleshooting issue missing Segment in PCB Display

Bulletin Type : Quality Parts Others

Applicable only with symptoms with every repair

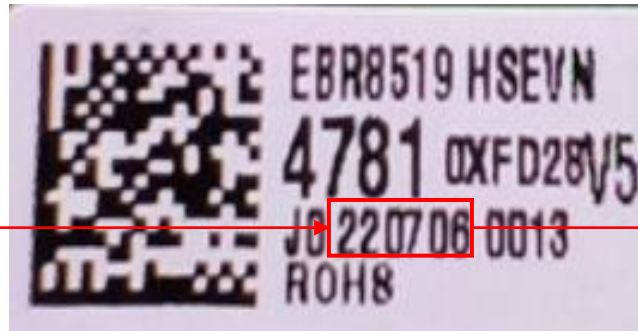
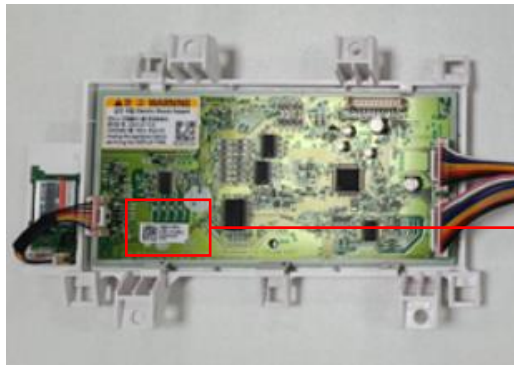
Applicable for Serial Number : 2020.01 ~ 2023.01 (001VW* ~ 301VW*)

Applicable for models: All model Victor2 WD
 Detail : Refer to [Appendix. Model list]

Symptoms	Screen of WM was missing segment of LED.	Picture	 <p style="text-align: center;">Missing Segment</p>
Cause	Smart 180/200Ω resistor corrosion by sulfur		

1. Solution :

When the same defect happened, change the PCB Assembly, Display type that have been improved.
 (PCB Display which have production date from 2022.12.26 have been improved)



Prod date of PCB Display
 For example, in label was written 220706 → It means that this PCB was produced on 2022.07.06.
 Improved PCB apply from 2022.12.26.

Service Bulletin

2. Current and New (Visual / Part number & Name etc)

SVC Location	Description	P/No.		Visual	
		Before	After	Before	After
F110	PCB Assembly,Display	EBR85194721	EBR85194721	No change	

Part Interchangeable :

	Current Part	New Part
Current Product		✓
New Product		✓

Scrap Current Part in LG Warehouse : Yes No

Extended Warranty

This service is covered by an extended warranty Yes No

- If Yes, Parts for () years and Labor for () years by LG.
- If No, Parts and labor are charged to the customer if outside warranty period.

• The warranty period, including any extended warranty above, starts from the original date of purchase.

Repair Instruction

1. Model apply

PCBA Part No Before	PCBA Part No After	Model Name	Sale Model
EBR85194721	EBR85194721	F3L2CRV0W.ABWELAT	WD20WV2S6
		F3L2CRV1W.ABWELAT	WD20WV2S6
		F3L2CRV2E.ABLECOL	WD22BV2S6B
		F3L2CRV2E.ABLELAT	WD22BV2S6
		F3L2CRV2E.ABLEVUS	WM3998HBA
		F3L2CRV2R.ACRELAT	WD22RV2S6
		F3L2CRV2T.ASSECOL	WD22VV2S6B
		F3L2CRV2T.ASSELAT	WD22VV2S6
		F3L2CRV2TC.ASSELAT	WD20VV2S6
		F3L2CRV2TE.ASSECOL	WD20VV2S6
		F3L2CRV2W.ABWELAT	WD22WV2S6
		F3P2CRV2E.ABLECOL	WD22BV2S6BR
		F3P2CRV2E.ABLELAT	WD22BV2S6R
F3P2CRV2T.ASSECOL	WD22VV2S6BR		
F3P2CRV2T.ASSELAT	WD22VV2S6R		
F3P2CRV2TC.ASSECOL	WD20VV2S6R		
F3P2CRV2TC.ASSELAT	WD20VV2S6R		
F3P2CRV2W.ABWELAT	WD22WV26R		
F3P2CRV2WC.ABWELAT	WD20WV26R		
F3P2CRVBE.ABLELAT	WD22BV2S6GR		



Modlapply

Service Bulletin

Clothes stuck or inserted under pulsator (Agitator)

Bulletin Type : Quality

Parts


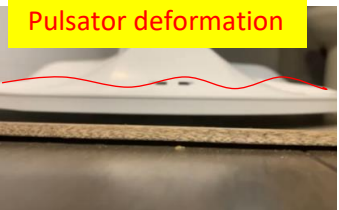

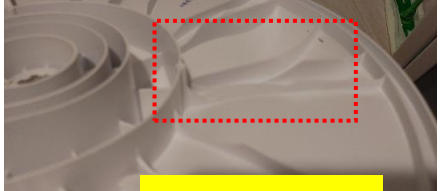
Others

Applicable only with symptoms

with every repair

Applicable for Serial Number : 009TW*** ~ 105TW*** (September 2020 ~ May 2021)
 008TN*** ~

Applicable for models : T17A1EFHTW.ABWETUS (WT7305CW), T17A1EFHT5.ASSETUS (WT7305CV), T17A1EFHTW.ABWEECI (WT7305CW), T17A1EFHT5.ASSEECI (WT7305CV), T17A1EFHUW*.ABWEUUS (WT7305CW), T17A1EFHUW*.ABWEUCI (WT7305CW), T17A1EFHU5*.ABWEUUS (WT7305CV), T17A1EFHU5*.ABWEUCI (WT7305CV), T17A4SEHUW*.ABWEUUS (WT7155CW), T14ASEHUW*.ABWEUUS (WT7005CW), T18A1EFHU5.ASSEUUS (WT7405CV), T18A1EFHUW.ABWEUUS (WT7405CW)

Symptoms	Cloth stuck or insert under pulsator (Agitator)	Picture	 <p>Cloth stuck</p>	 <p>Pulsator deformation</p>
Cause	Cloths going under pulsator during washing because of gap between pulsator and tub base too big (pulsator or agitator deformation)		 <p>Cloth stuck</p>	 <p>Pulsator damage</p>

1. Repair Instruction

- Change new pulsator (same current P/No.)
- Pulsator, Washing P/No.MGP62562101

Service Bulletin

2. Current and New (Visual / Part number & Name etc) : Not change P/No. and same structure (just control dimension)

- Pulsator, Washing P/No.MGP62562101 (Location K020)

Factory	EATH-LGETH
Factory Model	T17A1EFHTW
Suffix Code	ABWEECI
Division	WM Division(DFZ)
Location No.	K020
Part No.	MGP62562101
Description	Pulsator,Washing
Specification	MOLD PP HG41TSA P.PI(HG 41T) BLUE WHITE T2.5 TD (W)-PJT D455



Part Interchangeable :
N/A

	Current Part	New Part
Current Product	-	-
New Product	-	-

Scrap Current Part in LG Warehouse : Yes No

Extended Warranty

This service is covered by an extended warranty Yes No

- If Yes, Parts for () years and Labor for () years by LG.
- If No, Parts and labor are charged to the customer if outside warranty period.

• The warranty period, including any extended warranty above, starts from the original date of purchase.

- The information is intended for experienced technicians, not for customer .
- The information is subject to change or update without notice.

Gas Oven SVC Bulletins

Service Bulletin

Product : Gas Oven

Bulletin # : CVZ202300002-01

Release Date : 2023.1/20

[SVC Guide] Replace the cooktop burner orifices(nozzles)

Bulletin Type : SVC Notice Parts Others

Applicable only with symptoms

with every repair

Applicable for Serial Number : All

Applicable for models

(USA) LSDL6336*, LSGL6335*, LSGL6337*, LTGL6937*, LSGS6338*, LSDS6338*, LSGL5831* LSGL5833*

SKSGR360*, SKSGR480*, SKSDR360*, SKSDR480*

(Canada) LSGL6335*, LSGS6338*, LSGL5831* LSGL5833*, SKSGR360*, SKSDR360*, SKSDR480*

Symptoms	Replace the cooktop burner orifices(nozzles)	Picture	N/A
Cause	<ol style="list-style-type: none"> Gas Conversion (LP ↔ LN) <ul style="list-style-type: none"> When the gas type supplied to the customer's House and the product gas type are different. * The range leaves the factory set for use with LN(natural gas). If the orifices are need to be replaced. <ul style="list-style-type: none"> In case of the nozzle is deformed or damaged or if replacement is required for other reasons. 		

Service Bulletin

1. Repair Instruction

When Converting the Gas, proceed according to the contents of 'CONVERSION KITS'.
 Also, Please be sure to check the following 'Note' below.



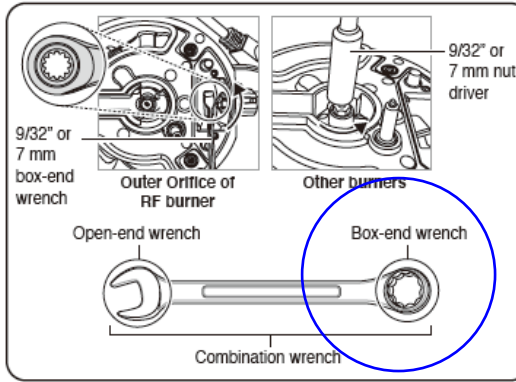
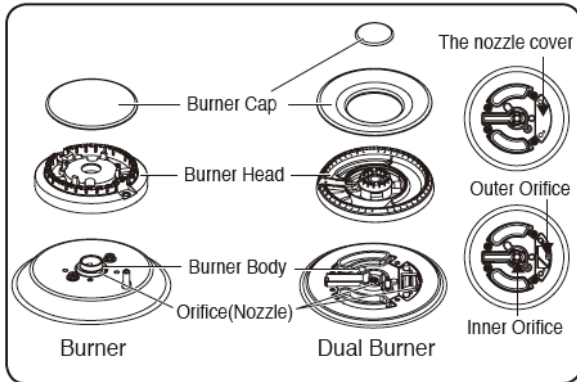
Conversion Kit

※ When converting to LP gas, keep 'CONVERSION KITS' in case you need to convert back to natural gas.
 And save the orifices removed from the appliance for future use.

[Note]

1) To convert the Outer Orifice of the Dual Burner, using a 9/32" or 7mm box-end wrench. (The 6 point box-end wrench is recommended.)

※ When using an open-end wrench, the nozzle may be damaged or deformed as 'Defect Case' below, so use a box-end wrench.



(Defect Case)



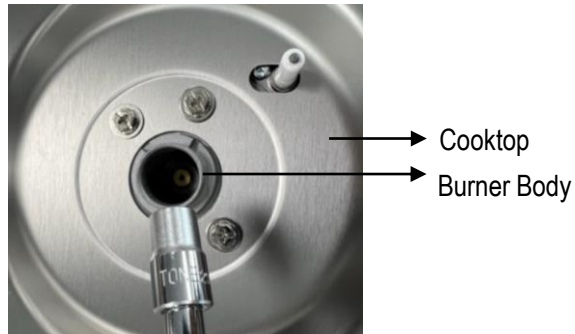
Service Bulletin

1. Repair Instruction

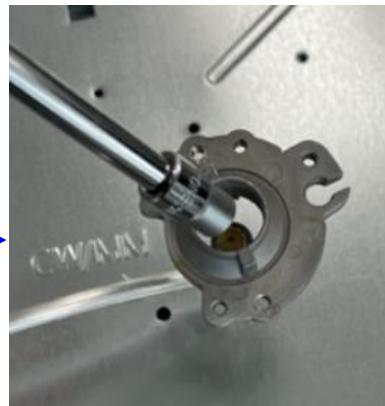
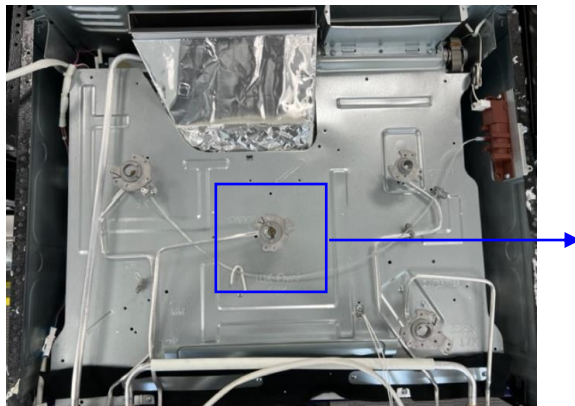
[Note]

2) When removing the orifices, proceed with the burner body fixed to the cooktop with screws.

OK



NG ※ Do not remove the orifices when the cooktop is removed or the burner body is not secured.
 (The pipe may be damaged as shown in the 'Defect Case' below.)



(Defect Case)



Service Bulletin

Part Interchangeable :		Current Part	New Part	Scrap Current Part in LG Warehouse : Yes <input type="checkbox"/> No <input checked="" type="checkbox"/>
	Current Product	Yes	Yes	
	New Product	Yes	Yes	

Extended Warranty

This service is covered by an extended warranty Yes No

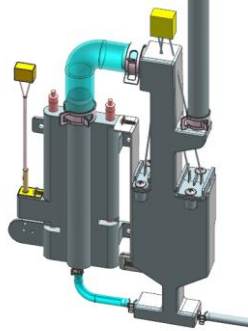

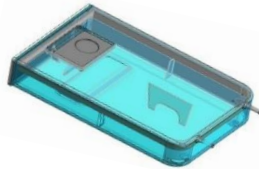
- If Yes, Parts for () years and Labor for () years by LG.
- If No, Parts and labor are charged to the customer if outside warranty period.

- The warranty period, including any extended warranty above, starts from the original date of purchase.

- The information is available through “<https://gsfs-america.lge.com>” with a valid ID.
- The information is intended tor experienced technicians, not for customer .
- The information is subject to change or update without notice.

Service Bulletin

2. Current and New (Visual / Part number & Name etc)

SVC Location	Description	P/No	Visual	
			Before	After
3022	Heater Assembly	AEG74450005	  <p>Heater Assembly MFG Date : 2010.10 ~ 2022.07</p>	<p>Same</p> <p>Heater Assembly MFG Date : 2022.08~</p>
3731	Tank Assebmly,Water	AJL74692007		<p>Same</p>

※ Appearance is same. Just Parts interior structure is different. Because parts variance and Molding Condition.

Service Bulletin

<p>Part Interchangeable :</p> <table border="1" style="width: 100%; border-collapse: collapse; margin-top: 10px;"> <thead> <tr> <th style="width: 20%;"></th> <th style="width: 30%;">Current Part</th> <th style="width: 30%;">New Part</th> </tr> </thead> <tbody> <tr> <td>Current Product</td> <td style="text-align: center;">No</td> <td style="text-align: center;">Yes</td> </tr> <tr> <td>New Product</td> <td style="text-align: center;">No</td> <td style="text-align: center;">Yes</td> </tr> </tbody> </table>		Current Part	New Part	Current Product	No	Yes	New Product	No	Yes	<p>Scrap Current Part in LG Warehouse : Yes <input checked="" type="checkbox"/> No <input type="checkbox"/></p>
	Current Part	New Part								
Current Product	No	Yes								
New Product	No	Yes								

Extended Warranty

This service is covered by an extended warranty Yes No

- If Yes, Parts for () years and Labor for () years by LG.
- If No, Parts and labor are charged to the customer if outside warranty period.

• The warranty period, including any extended warranty above, starts from the original date of purchase.

- The information is intended for experienced technicians, not for customer .
- The information is subject to change or update without notice.



TV SVC Bulletins

Subject: Guide including tool option changes when changing to a new SVC module

Bulletin Type: SVC Notice Parts Others Applicable only with symptoms with every repair

Applicable for Serial Number: All Serial Number

Applicable for models: 55UP76,77,80,81

<p>Symptoms & Cause</p>	<p>In case of module, panel failure. → Supply substitution SVC module (Panel) and Change the Panel Maker.</p>	<p>Picture</p>	
------------------------------------	---	-----------------------	--

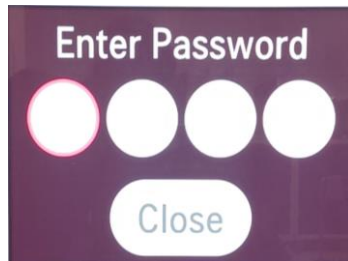
1. Repair Instruction

This is how to change the tool option

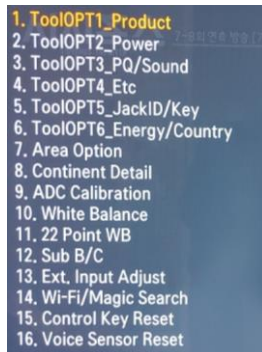
- Must be change Panel Marker, BOE → BOE_FAB



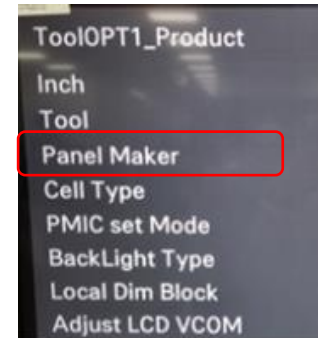
① Click “ADJ” button in Adjust Remote-control



② Enter P/W



③ “1.ToolOPT1_Product”



④ Change Panel Maker (BOE → BOE_FAB)

Service Bulletin

Product: Smart TV
 Issue No #: GLZ202300022-01
 Issue Date: 06/09/2023

2. Current and New Kit (Visual / Part number & Name etc)

After repair using a substitute module, change the Panel Maker

Current				New Module			
Module(Kit) P/No	Module Name (Kit)	Module Maker	Panel Maker	Module(Kit) P/No	Module Name (Kit)	Module Maker	Panel Maker
EAJ65756904	HV550QUB-F8D_Panel Kit	HSE	BOE	EAJ65756910	HV550QUB-F1D_Panel Kit	HSE	BOE



ToolOPT1_Product		F8D	F1D
	Inch	55	55
	Tool	UP80	UP80
	Panel Maker	BOE	BOE_FAB
	PMIC set Mode	on	on
	BackLight Type	direct	direct
	Local Dim Block	6	6
	Adjust LCD VCOM	off	off

Part Interchangeable:

	Current Part	New Part
Current Product	○	○
New Product	X	○

Scrap Current Part in LG Warehouse: Yes No

Extended Warranty

This service is covered by an extended warranty Yes No

- If Yes, Parts for () years and Labor for () years by LG.
- If No, Parts and labor are charged to the customer if outside warranty period.

- The warranty period, including any extended warranty above, starts from the original date of purchase.
- The information is available through “<https://gsfsplus-america.lge.com>” with a valid ID.
- The information is intended for experienced technicians, not for customer .
- The information is subject to change or update without notice.

Service Bulletin

Product: Smart TV
 Issue No #: GLZ202300022-02
 Issue Date: 06/21/2023

3. Current and New Module (1/2)

Applied module spec, P/N, Module Maker, Panel Maker (Detail information etc.)

Current Module (EAJ65756904 Kit applied module)				New Module (EAJ65756910 Kit applied module)			
Module P/N	Module Spec	Module Maker	Panel maker	Module P/N	Module Spec	Module Maker	Panel maker
EAJ65691803	AC550DQG-SBPA1_RA	LGE(BM)	BOE	EAJ65846101	HC550MQB-ABHA1_GZ	HSE	BOE
EAJ65716003	AC550DQG-SBPA2_RA	LGE(BM)	BOE	EAJ65789501	HC550DQG-ABDAA_IN	HSE	BOE
EAJ65716103	AC550DQG-SBPA3_RA	LGE(BM)	BOE	EAJ65789503	HC550DQG-ABDAA_CB	HSE	BOE
EAJ65691801	HC550DQG-ABDA1_IN	HSE	BOE	EAJ65789504	HC550DQG-ABDAA_MA	HSE	BOE
EAJ65691806	HC550DQG-ABDA1_MA	HSE	BOE	EAJ65789505	HC550DQG-ABDAA_EG	HSE	BOE
CRD34043101	HC550DQG-ABDA1_IN	HSE	BOE	EAJ65846201	HC550DQG-ABHA3_IN	HSE	BOE
EAJ65691805	NC550TQG-ABKH1_RS	NEW OPTICS	BOE	CRD34109501	HC550DQG-ABHA3_IN	HSE	BOE
EAJ65716001	HC550DQG-ABDA2_IN	HSE	BOE	EAJ65846206	HC550DQG-ABHA3_MA	HSE	BOE
EAJ65716007	HC550DQG-ABDA2_EG	HSE	BOE	EAJ65846102	HC550DQG-ABHA2_CB	HSE	BOE
EAJ65716008	AC550DQG-SBPA2_IL	HSE	BOE	EAJ65846106	HC550DQG-ABHA2_MA		BOE
CRD34038401	HC550DQG-ABDA2_IN	HSE	BOE	EAJ65829701	HC550DQG-ABHA1	HSE	BOE
EAJ65716005	NC550TQG-ABKH2_RS	NEW OPTICS	BOE	EAJ65829702	HC550DQG-ABHA1_CB	HSE	BOE
EAJ65716101	HC550DQG-ABDA3_IN	HSE	BOE	EAJ65829706	HC550DQG-ABHA1_MA	HSE	BOE
EAJ65716106	HC550DQG-ABDA3_MA	HSE	BOE	EAJ65789502	AC550DQG-SBPAA_IL	LGE(BM)	BOE
EAJ65716107	HC550DQG-ABDA3_EG	HSE	BOE	EAJ65789507	NC550TQG-ABLP1_MX	NEW OPTICS	BOE
EAJ65716108	AC550DQG-SBPA3_IL	HSE	BOE	EAJ65789401	HC550DQG-ABDA7_IN	HSE	BOE
EAJ65716102	HC550DQG-ABDA3_CB	HSE	BOE	EAJ65750309	HC550DQG-ABDA8_IN	HSE	BOE
CRD34042401	HC550DQG-ABDA3_IN	HSE	BOE	EAJ65789403	AC550DQG-SBPA7_RA	NEW OPTICS	BOE
EAJ65716105	NC550TQG-ABKH3_RS	NEW OPTICS	BOE	EAJ65789404	NC550TQG-ABKH7_MX	NEW OPTICS	BOE
EAJ65716104	NC550TQG-ABKH3_MX	NEW OPTICS	BOE	EAJ65789405	NC550TQG-ABKH7_RS	NEW OPTICS	BOE
				EAJ65829703	NC550TQG-ABKHA_RS	NEW OPTICS	BOE
				EAJ65829704	NC550TQG-ABKHA_MX	NEW OPTICS	BOE
				EAJ65846204	NC550TQG-ABKHC_MX	NEW OPTICS	BOE
				EAJ65789408	AC550DQG-SBPA7_IL	LGE(BM)	BOE
				EAJ65750305	NC550TQG-ABKH6_RS	NEW OPTICS	BOE
				EAJ65750104	NC550TQG-ABKH4_MX	NEW OPTICS	BOE
				EAJ65750107	HC550DQG-ABDA4_EG	HSE	BOE
				EAJ65789402	HC550DQG-ABDA7_CB	HSE	BOE
				EAJ65789406	HC550DQG-ABDA7_MA	HSE	BOE
				EAJ65789407	HC550DQG-ABDA7_EG	HSE	BOE
				EAJ65789506	AC550DQG-SBPAA_RA	LGE(BM)	BOE
				EAJ65789601	HC550DQG-ABDAB_IN	HSE	BOE
				EAJ65789603	HC550DQG-ABDAB_CB	HSE	BOE

Service Bulletin

Product: Smart TV
Issue No #: GLZ202300022-02
Issue Date: 06/21/2023

3. Current and New Module (2/2)

Applied module spec, P/N, Module Maker, Panel Maker (Detail information etc.)

Current Module (EAJ65756904 Kit applied module)				New Module (EAJ65756910 Kit applied module)			
Module P/N	Module Spec	Module Maker	Panel maker	Module P/N	Module Spec	Module Maker	Panel maker

See attached file: [\(GLZ202300022-01-Module-Old-to-New-Kit-List.xlsx\)](#) for complete list